

**RIVERSIDE COUNTY
COMMUNITY CORRECTIONS PARTNERSHIP
EXECUTIVE COMMITTEE**

DOWNTOWN LAW BUILDING
3960 ORANGE STREET, 5TH FLOOR CONFERENCE ROOM, RIVERSIDE

JULY 19, 2011, 10:00 A.M.

AGENDA

1. CALL TO ORDER – ALAN M. CROGAN
2. APPROVAL OF MINUTES – JULY 12, 2011
3. AB 109
PowerPoint presentation on the role of the CCP Executive Committee; facts of AB 109 and impact on Riverside County.
4. ELECTION OF VICE-CHAIRPERSON
5. IMPORTANT DATES / DEADLINES
 - July 26, 2011: Board of Supervisors
 - August 1, 2011: Designate Department for Post Release Community Supervision (PRCS)
 - August 15, 2011: Board of Supervisors Workshop
 - August 16, 2011: Board of Supervisors
 - October 1, 2011: Implement AB 109
6. COMMITTEE MEMBER COMMENTS
7. PUBLIC COMMENTS
8. NEXT MEETING – AUGUST 2, 2011; 10:00 A.M.

In accordance with State Law (Brown Act):

- *The meetings of the CCP Executive Committee are open to the public. The public may address the Committee within the subject matter jurisdiction of this committee.*
- *Disabled persons may request disability-related accommodations in order to address the CCP Executive Committee. Reasonable accommodations can be made to assist disabled persons if requested 24-hours prior to the meeting by contacting Riverside County Probation Department at (951) 955-2814.*
- *The public may review open session materials at Probation Administration, 3960 Orange St., 6th Floor, Riverside, CA.*

COMMUNITY CORRECTIONS PARTNERSHIP
EXECUTIVE COMMITTEE WORKING GROUP MEETING
MISSION INN
July 12, 2011, 7:00 A.M.

MINUTES

In Attendance: Alan M. Crogan, Paul Zellerbach, Gary Windom, Jerry Wengerd, Pat Williams, Jerry Gutierrez, Mark Hake, and Bill Palmer.

COMMUNITY CORRECTIONS PARTNERSHIP EXECUTIVE COMMITTEE

Chief Crogan explained the composition of the executive committee as established by statute: The appointment by the Board of Supervisors of one representative from county mental health, substance abuse, or department of social services. Susan Loew, Director of DPSS was consulted by Chief Crogan and is in agreement will not be appointed, but requested to be included in work groups related to implementation of AB 109. Jerry Wengerd, Director of the Department of Mental Health has agreed to participate in the executive committee. Chief Crogan made a motion to recommend Mr. Wengerd's appointment by the Board of Supervisors. Motion seconded by Mr. Zellerbach, all voted in favor.

Chief Crogan also explained to the group that statute only allows the Presiding Judge to send a designee and on matters that come to a vote of the committee each member must be present to vote and will not be able to give their vote to a designee. Mark Hake will follow up with the Court to determine if Judge Ellsworth or a designee will be attending future meetings.

The role of the committee was discussed to include recommendation of a local plan to implement AB 109 to the Board of Supervisors.

TIMELINES

A time line for implementation of AB 109 on October 1, 2011, was discussed and included next week's CCP Executive Committee Meeting on Tuesday July 19th at 10 AM, 5th floor of the Downtown Law Building.

Statute requires the county to notify CDCR by August 1, 2011, of which county agency will be responsible for the supervision of the Post Release Community Supervision (PRCS). All were in agreement the Probation Department will be the responsible agency.

A Form 11 will go to the Board of Supervisors on July 26, 2011, recommending the Probation Department be responsible for supervision of the PRCS population and also designating Mr. Wengerd as an executive committee member.

POPULATION

The committee discussed the definitions of the PRCS population and the Non-Non-Non (N3) populations and how the populations are addressed in terms of custody time, housing, revocation hearings, and supervision. Mr. Gutierrez indicated housing these offenders locally will be problematic due to a lack of available jail bed space. Options including contracting with CDCR for hard beds and fire camp beds, and other alternatives to traditional custody time were discussed and additional work will need to be completed to adequately address this issue. Additionally, Bill Palmer will follow up on verifying whether or not the N3 population is housed locally if sentenced for a period longer than three years.

FUNDING

The three funding allocations for year one of AB 109 were reviewed. \$21 million for local costs related to supervision, treatment, and custody for the PRCS and N3 populations; \$1.48 million for hiring, retention, training, data improvements, contracting costs and capacity planning; and \$200K for local plan development by the CCP.

Chief Crogan recommended the Probation Department be the fiscal administrator for AB 109 and the funding for all other county agencies and contracts (RFPs and MOUs) be coordinated by the Probation Department. There was consensus for this concept, but a vote on the matter was postponed to the next meeting.

Next Meeting: July 19, 2011.

Minutes submitted by Mark A. Hake, Chief Deputy Probation Officer

Potential Bed Space

#	County	City	Facility	Capacity	Contact information
1.	Fresno	Coalinga	Claremont Community Correctional Facility	514	Jim Applegate, Facility Director, (559) 935-0851 ext.203
2.	Kern	Bakersfield	Casa Aurora, Female Rehabilitative Community Correctional Center	75	Wendy Broughton, Vice President, (858) 573-2600
3.	Kern	Bakersfield	Mesa Verde Community Correctional Facility	400	James Black, Vice President, GEO (310) 348-3000
4.	Kern	Bakersfield	Turning Point, Community Prisoner Mother Program	24	Kathleen Richards, Facility Director, (661) 342-9929
5.	Kern	Delano	Delano Community Correctional Facility	578	George Galaza, Chief, (661) 721-3270 ext. 101
6.	Kern	McFarland	Central Valley Modified Community Correctional Facility	600	James Black, Vice President, GEO (310) 348-3000
7.	Kern	McFarland	Golden State Modified Community Correctional Facility	600	James Black, Vice President, GEO (310) 348-3000
8.	Kern	McFarland	McFarland Community Correctional Facility	250	James Black, Vice President, GEO (310) 348-3000
9.	Kern	Shafter	Shafter Community Correctional Facility	548	Paul Lozano, Chief, (661) 746-8900 ext. 5109
10.	Kern	Taft	Taft Community Correctional Facility	526	Kenneth McMinn, Chief, (661)765-2840 ext 140
11.	Lassen	Susanville	Lassen Community Correctional Facility	155	John Mineau, Undersheriff, (530) 251-5245
12.	Los Angeles	Pomona	Prototypes, Community Prisoner Mother Program	24	Judy Stallings, Facility Director, (909) 240-5611
13.	San Bernardino	Adelanto	Desert View Community Correctional Facility	625	James Black, Vice President, GEO (310) 348-3000
14.	Sutter	Live Oak	Leo Chesney Female Community Correctional Facility	305	James Black, Vice President, GEO (310) 348-3000
15.	Sacramento	Elk Grove	Rio Cosumnes Correctional Center	464	Scott Jones, Sheriff, (916) 874-7146
16.	Alameda	Dublin	Santa Rita Jail	750	Brett Keteles, Assistant Sheriff, (510) 272-6866

*CDCR is not endorsing any facility on this list.

**This list may not be exhaustive and is only for support purposes.

Potential Bed Space

#	County	City	Facility	Capacity	Contact information
17.	San Diego	San Diego	Family Foundations Program	35	Lynn Pimental, CEO, (559) 977-0804
18.	Fresno	Fresno	Family Foundations Program	35	Lynn Pimental, CEO, (559) 977-0804
19.	Los Angeles	Santa Fe Springs	Family Foundations Program	35	Brenda Wiewal, CEO, (562) 906-2686

*CDCR is not endorsing any facility on this list.

**This list may not be exhaustive and is only for support purposes.

GEO GROUP

Rough Pricing: 65.00 – 80.00 per day based on services requested

<u>No.</u>	<u>County</u>	<u>Capacity</u>
3.	Kern	400
6.	Kern	600
7.	Kern	600
8.	Kern	250
13.	S.B.	625
14.	Sutter	305

All fees are negotiated with the client based on services requested.

Number of beds

Services Needed (Food, Medical, Housing)

Treatment (Substance Abuse, Life Skills, Recreation, Mental health etc...)

James Black, Vice President (310) 348-3000
jblack@geogroup.com

Taft Community Correctional Facility

Pricing: 60.00 – 75.00 per day depending on services requested

Maximum Capacity - 512

Type III Facility, complies with Title 15; being courted by San Bernardino, San Diego and LA Counties.

Kenneth McMinn, Chief (661) 765-2840 ext. 140

Shafter Community Correctional Facility

Basic Pricing: 60.00 – 75.00 per day.

Maximum Capacity – 548

Services requested may change pricing.

Paul Lozano, Chief (661) 746-8900 ext.5108

Averages

Monthly: 1,800 – 2,400 per inmate

Annual: 21,600 – 28,800 per inmate

Riverside County Community Corrections Partnership Executive Committee



July 19, 2011
Implementation of the 2011
Public Safety Realignment

Executive Committee Responsibility

– PC 1230.1

- The Executive Committee is chaired by the Chief Probation Officer
- Recommend a local plan to the County Board of Supervisors for implementation of the 2011 Public Safety Realignment
- The Executive Committee shall vote on the plan
- No designees except for Presiding Judge
- No proxy vote except for Presiding Judge designee
- The plan is accepted by the Board of Supervisors unless rejected by a vote of four-fifths

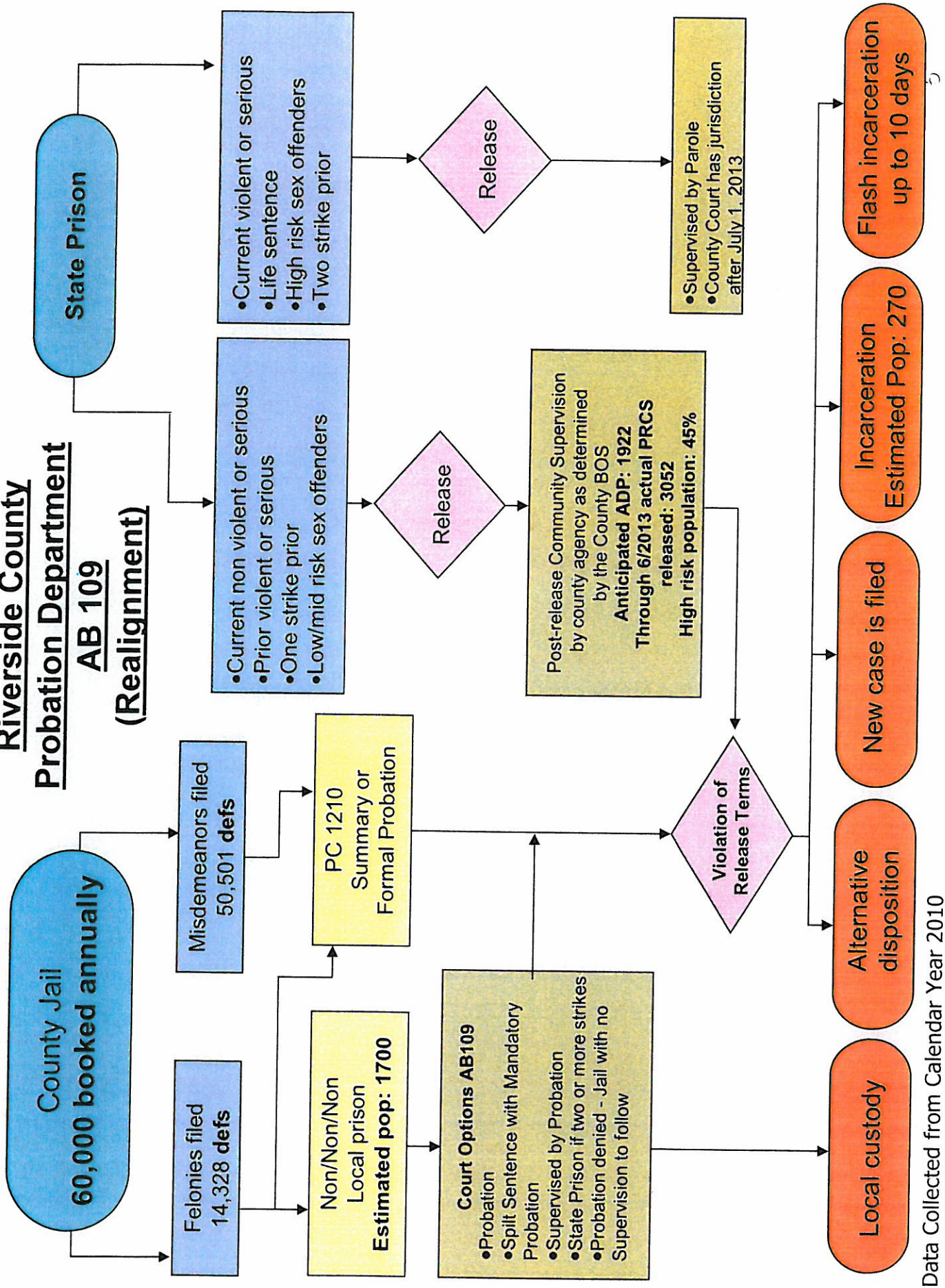
The Local Plan – 1230.1 (d) PC

- Consistent with local needs and resources
- Maximize resources in evidence-based correctional sanctions and programs, including but not limited to:
 - Drug courts
 - Residential multiservice centers
 - Mental health treatment
 - Day reporting centers
 - Electronic and GPS monitoring
 - Counseling programs
 - Victim restitution programs
 - Community service programs
 - Educational programs
 - Work training programs

Community Supervision Agency

- The county agency responsible to supervise the Post-release Community Supervision Population must be designated by the county's Board of Supervisors – 3451 PC
- Form 11 to Board of Supervisors with designation scheduled for July 26, 2011
- The designated county agency shall notify CDCR by August 1, 2011

Riverside County Probation Department AB 109 (Realignment)



Data Collected from Calendar Year 2010

Contracts With CDCR – 2057 PC

- Counties are authorized to contract with the Department of Corrections and Rehabilitation for the commitment of persons who have a felony conviction.
- Options Include:
 - Hard Beds (Jail/Prison)
 - Fire Camps
 - Public Community Corrections Facilities (CCF)

Riverside County PRCs Population

Average Daily Population (ADP)	Less Than 3 Year Sentence	More Than 3 Year Sentence
1601	990	611

- ADP is the number used by DOF to determine the funding formula to each county

Projected Release of PRCs to Riverside County

	JAN	FEB	MAR	APR	MAY	JUN	JUL	AUG	SEP	OCT	NOV	DEC	TOTAL
2011	-	-	-	-	-	-	-	-	-	236	237	228	701
2012	235	172	157	164	127	132	148	114	121	121	118	103	1712
2013	104	112	116	115	92	100	-	-	-	-	-	-	639
	Total												3052

Riverside County CDCR Parole Supervision Data

■ 2010 Parole ADP = 6,870

Parole Violations

	Technical	New Offense	Dismissals	Total
PRCS Population	1619	1856	87	3475
State Parole Pop	964	758	71	1722

Riverside County PRCs Population

- Total defendants sentenced to state prison in 2010 = 3,550
- Meets criteria for PRCs population = 2,517 (70%)
- Violent/Serious High Risk Population = 1,033 (30%)

PRCS

Property Offenses = 1,147 (32%)

Drug Offenses = 898 (25%)

Other Crimes = 472 (13%)

Current Riverside County Probation Population

* Active Felony Probationers = 14,172

Violent/Serious/Sex = 2,947 (21%)

PRCS Qualified:

Drug offenses = 5,165 (36%)

Property offenses = 4,184 (30%)

Other Crimes = 1,876 (13%)

Top Ten PRCs Offenses Currently on Probation Caseloads

11377(a) H&S	Possession of Controlled Substance	2,604 (44%)
459 PC	Burglary, 2 nd Degree	1,168 (20%)
273.5 PC	Corporal Injury on Spouse	704 (12%)
11378 H&S	Possession of Controlled Substance for Sale	410 (7%)
496 PC	Receiving Stolen Property	355 (6%)
11379(a) H&S	Transport/Import Controlled Substance	276 (5%)
12021(a)(1)PC	Felony in Possession Firearm	136 (2%)
666 PC	Petty Theft w/Prior	116 (2%)
11352(a) H&S	Transport/Sales Controlled Substance	82 (1%)
666.5 PC	Vehicle Theft w/Prior	26 (1%)
Total		5,877 (100%)

Riverside County Funding Allocation

- Year 1 Estimated for 9 months = \$21,074,467
- Implementation Funding (one-time) = \$1,487,050
 - Hiring, retention, training, data improvements, contracting costs, and capacity planning
- Additional Grant For CCP Planning = \$200,000
- District Attorney/Public Defender Activities = \$755,421
- Riverside County Superior Court Allocation = \$TBD

Probation Department's Plan

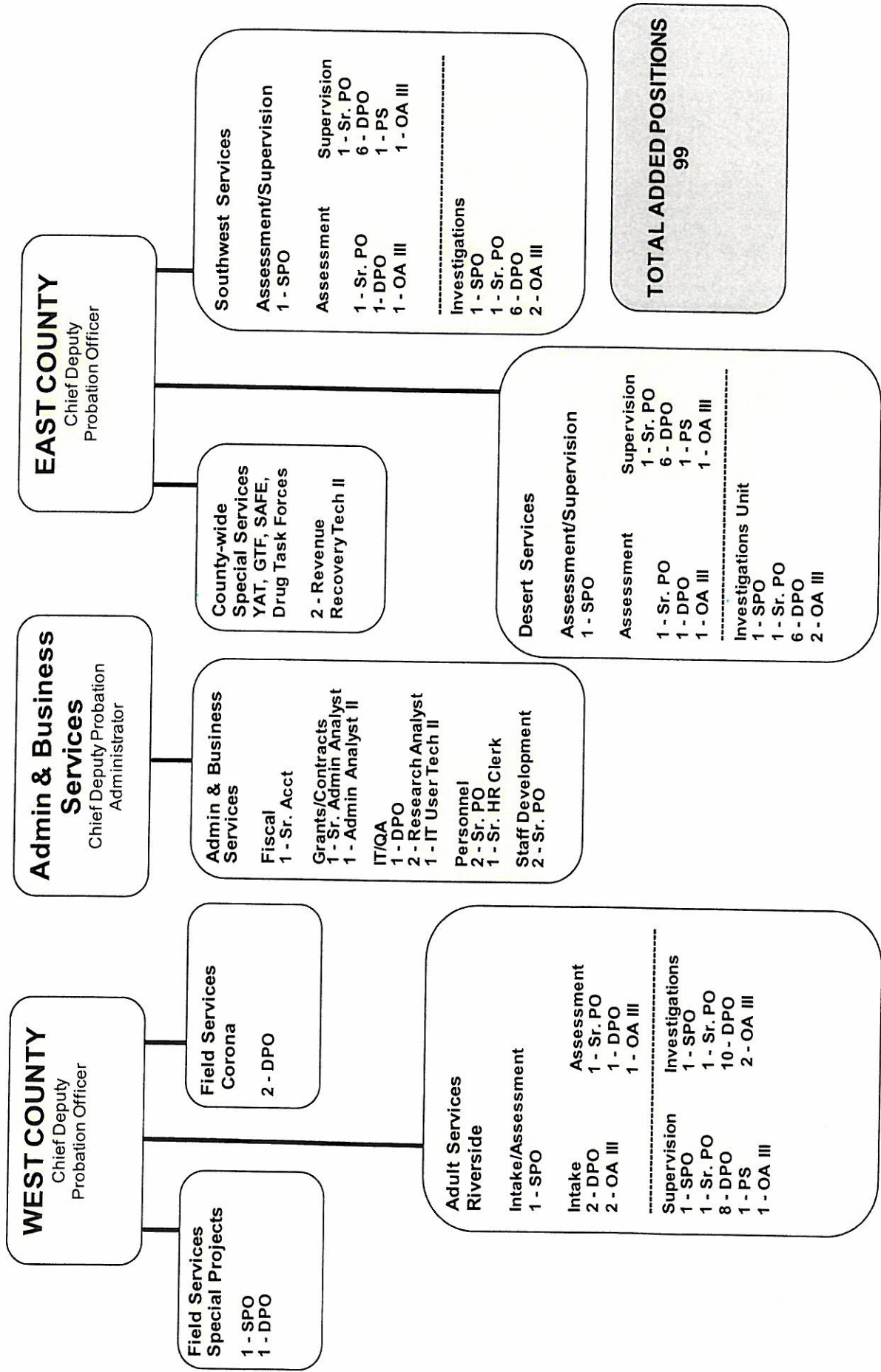
- Supervision of PRCS - \$9,032,096
 - \$7.4 Million Salary (9 months)
 - \$1.6 Million Lease Space/One-time Tenant Improvements/Equipment

- Ongoing yearly costs \$9,539,088
 - Supervision Intake Unit
 - Adult Investigations, Pre-Sentence Investigations and Reports
 - Assessment Unit
 - Multi-level Supervision Unit
 - High, Medium and Low Risk Caseloads
 - Administrative Support Infrastructure
 - Additional Office Space

Riverside County Probation Department

Organizational Chart AB 109

Updated: July 18, 2011



TOTAL ADDED POSITIONS
99

Important Dates

- July 26 – Board of Supervisors Meeting
 - Form 11 requesting Board to Designate County Agency Responsible for Supervision
 - Appoint Mental Health Director to the Executive Committee
 - Establish Trust Fund Accounts and Accept Allocations for \$21 Million to Implement AB 109 Local Plan
 - \$1.5 Million One-Time Funding for Program Start-up
 - \$200,000 One-Time Funding for CCP Planning

Important Dates

(Continued)

- August 1 – Designated Agency will Notify CDCR
- August 15 – Board of Supervisors Workshop on AB 109
- August 16 – Board of Supervisors Meeting – Form 11 Requesting Board to Approve Local Realignment Plan, Designate Probation as Fiscal Administrator, Establish Appropriations and Add Positions to the FY 11-12 Budget
- October 1 – Implement AB 109