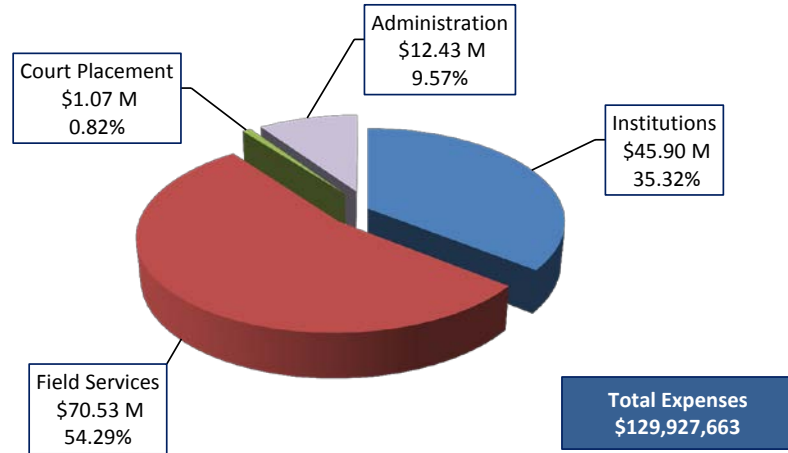
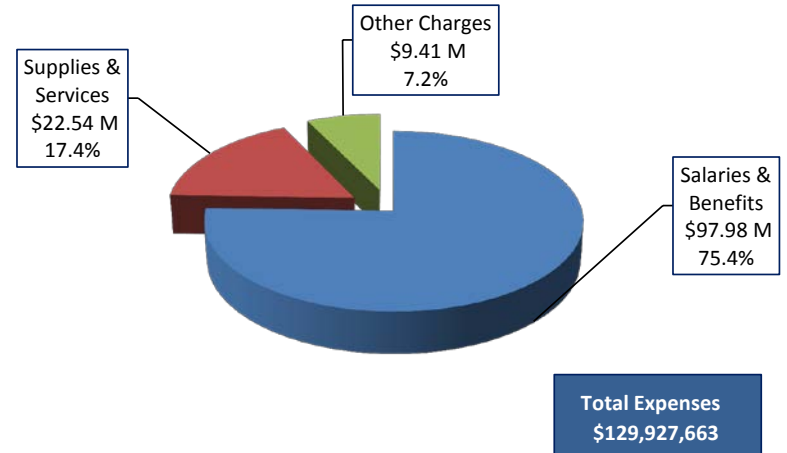


RIVERSIDE COUNTY PROBATION DEPARTMENT

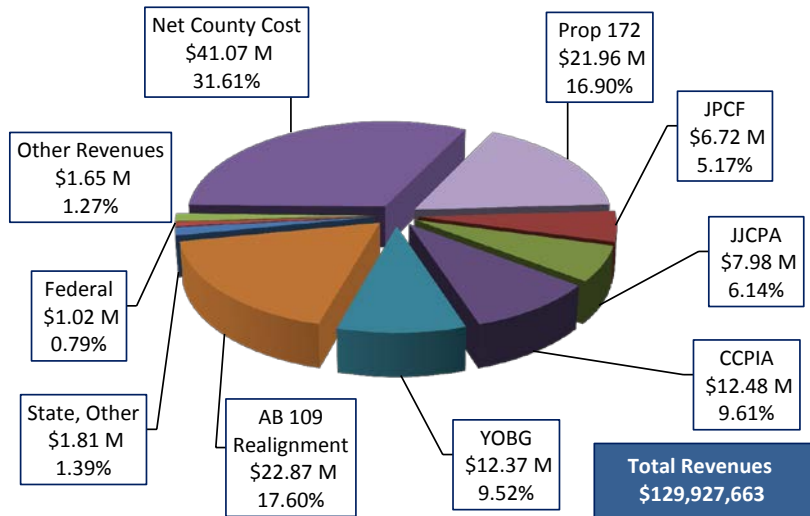
**FINAL BUDGET BY PROGRAM
FY 2016-2017**



**FINAL BUDGET BY APPROPRIATION
FY 2016-2017**



**FINAL BUDGET BY FUNDING SOURCE
FY 2016-2017**



**FINAL AUTHORIZED REGULAR POSITIONS
FY 2016-2017**

